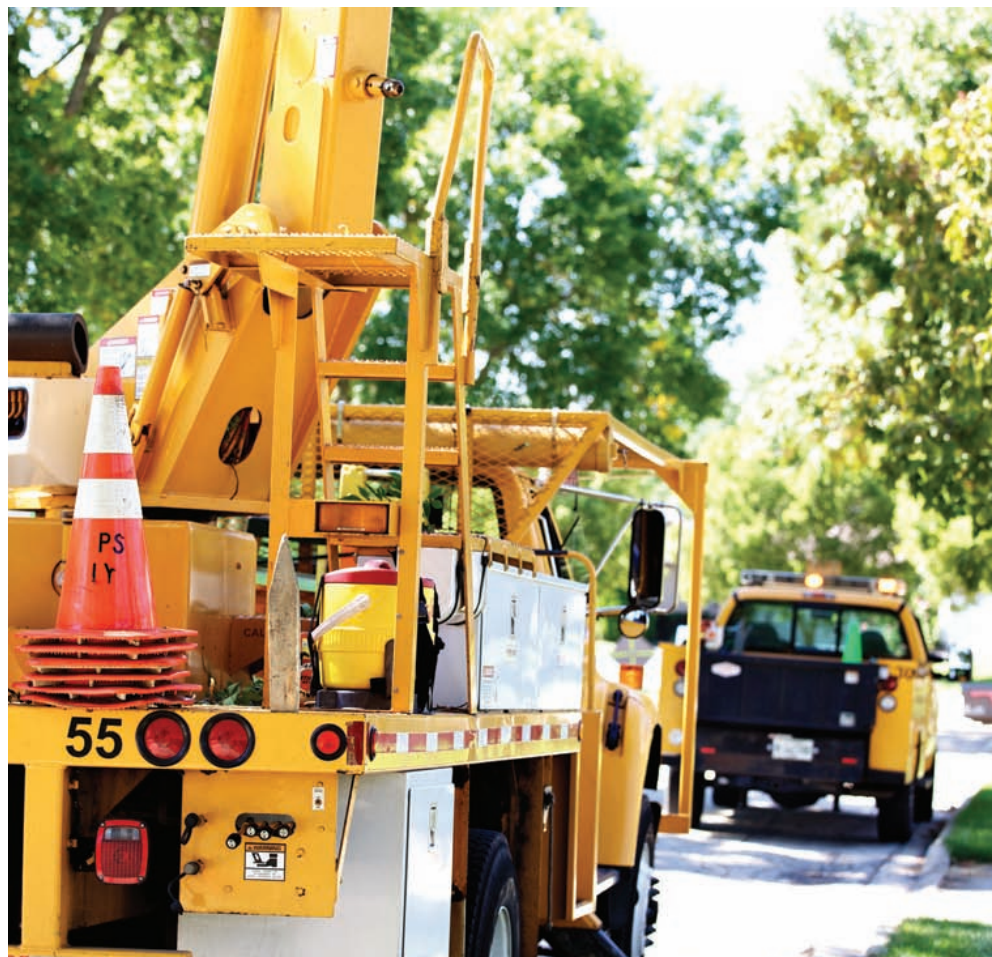


MOTOTRBO™ LINKED CAPACITY PLUS MULTI-SITE TRUNKING

CONNECT MORE PEOPLE, IN MORE LOCATIONS, FOR LESS



GET ALL THE BASICS TO LINK YOUR WORKFORCE TOGETHER BETTER



Your teams are on the move – making deliveries, repairing roads, responding to power outages and transporting passengers. You need to keep in touch with them, easily and affordably, wherever they travel. And with MOTOTRBO™ Linked Capacity Plus multi-site digital trunking, you can.

Do you want to communicate to a large field force across a wide area with a scalable, easy to use system? Then Linked Capacity Plus is your cost effective solution. Linked Capacity Plus provides the most important features your business needs – such as integrated voice and data communication in a single site or across a wide area, without the use of a separate network controller.

Whether crews need to talk to each other in the field or back at the office or they need to use data applications such as text messaging, location tracking or work order tickets, Linked Capacity Plus makes their work safer and their work day more productive.

WIDE AREA COVERAGE STAY IN TOUCH WHEREVER THEY TRAVEL

Connect with employees throughout their shifts, anywhere in the field. Linked Capacity Plus makes it possible to communicate across a wide area by linking adjoining single sites across an IP network. The result is continuous, unbroken coverage.

If you're a large busing company, for example, you can communicate with drivers, no matter how scattered the sites. Use text messaging to notify drivers and staff of a schedule change, location tracking to pinpoint buses, and automatic site roaming for personnel so they don't have to change channels while on the move.

HIGH CAPACITY REACH MORE PEOPLE, MORE PRODUCTIVELY

Scalable to meet your communication needs, Linked Capacity Plus expands coverage to more of your workers, wherever they work, with the push of a button. Now you get the benefits of digital communication for more users across multiple sites¹— ideal for utilities, public works departments, transportation companies, school districts and resorts.

If you're a utility company, for example, on each site you can use up to 12 paths for voice and data plus up to 6 additional paths for dedicated data for rapid information sharing. Use location tracking to pinpoint vehicles or work order tickets to schedule personnel or confirm a job has been completed. You reach more employees instantly and conveniently so they can work more safely and productively.

INCREASE EFFICIENCY WITH SMARTER APPLICATIONS

With Linked Capacity Plus, managing your mobile workforce has never been easier or more efficient. Now employees can access real-time information with integrated data applications designed for business. Like text messaging to share information when voice communication is inconvenient or distracting. Integrated GPS tracking² and dispatch to quickly locate and direct mobile work crews. And digital telephone patch² to communicate seamlessly between radios and landline or mobile phones.

IMPROVE SAFETY THROUGHOUT THE WORKPLACE

When it comes to creating a safer work environment, Linked Capacity Plus has you covered. Features such as transmit interrupt² prioritize important communication exactly when it's needed and emergency alerts enable workers to send notifications to a central location. Enhanced privacy ensures information-sharing is discreet and seamless roaming keeps them focused on the task without having to adjust their radio as they travel throughout the coverage area.

Business-critical data applications strengthen worker safety, too. Whether you're a courier service using GPS location tracking² to pinpoint a disabled delivery truck and send assistance or a utility company using man-down² to call for help when an injured employee can't, Linked Capacity Plus is on the job wherever they are.

EASY WAYS TO MIGRATE AT YOUR OWN PACE

MOTOTRBO radios are so flexible, they can be configured to operate on your existing MPT-1327 analogue trunking system². Then when you are ready to migrate to digital trunking, all it takes is a simple software upgrade.

You can move on your own terms – one talk group or department at a time – and spread out the cost of new equipment as your budget allows. And as capacity and coverage needs change, you can migrate to different MOTOTRBO systems:

- **Capacity Plus users** – do you need greater coverage because you have expanded to a larger facility or wish to cover a wide area? It's easy to migrate to Linked Capacity Plus.
- **IP Site Connect users** – do you need increased capacity because of an expanding workforce? Then Linked Capacity Plus is the ideal solution.

Whether you want to reach small teams or a large field force, in scattered sites or a single one, across the county or around the country, look to MOTOTRBO for the best system to fit your evolving business needs.

MOTOROLA'S APPLICATION DEVELOPER PROGRAM: MADE FOR MOBILITY

Powerful and flexible, MOTOTRBO is a business-critical communication tool that adapts to your workforce, customers and operations.

With the industry's largest Application Developer Program, MOTOTRBO offers a wide array of data applications to expand communication beyond voice. Work directly with third-party developers or your own IT staff to create customized applications designed for your unique needs.

DATA APPS THAT DRIVE BUSINESS



Work order tickets for faster customer response



Dispatch consoles for centralized communication



Email gateways to connect to email from your radio



Network monitoring to maximize system utilization



Man-down applications so radios call for help when workers can't

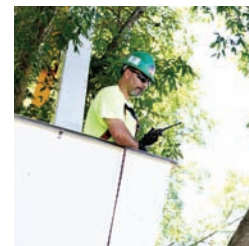


Telephony for communication between radios and landline or mobile phones



Text messaging for quick and discreet communication

MOTOTRBO PROFESSIONAL DIGITAL TWO-WAY RADIO SYSTEM



You get enhanced features, increased capacity, an incredible array of integrated data applications, exceptional voice quality and extended battery performance when you move to MOTOTRBO.

MOTOTRBO is a comprehensive communication solution of portable and mobile radios, repeaters, accessories, applications and services so you can tailor the system to your workplace and your workers perfectly.

- Static and noise are rejected to make voice communication remarkably clear
- Integrated text messaging, Bluetooth® and GPS raise your communication to a new level²
- Count on greater reliability with 40% longer battery life than analogue radios
- DMR digital technology using TDMA delivers twice the calling capacity of analogue radios for the price of one frequency license
- Infrastructure costs are half of FDMA-based digital systems because a second call doesn't need a second repeater
- Benefit from business-critical features such as Motorola's unique Transmit Interrupt suite to prioritize communication exactly when you need it
- Meets demanding IP57² specifications for submersibility in water as well as U.S. Military and Motorola standards for durability and reliability
- Provides easy migration from analogue to digital because it can operate in both modes²
- Longer talk time and clearer audio are possible because of Motorola's leading-edge IMPRES™ technology in batteries, chargers and audio accessories
- Complement your MOTOTRBO radio with a complete portfolio of Motorola Original® audio, battery, charging, carrying and mounting accessories

For more information on how to get connect more people in more locations for less, visit motorolasolutions.com/mototrbo, or find your closest Motorola representative or authorised Partner at [motorola.com/Business/XU-EN/Contact Us](http://motorola.com/Business/XU-EN/Contact_Us)

¹ Maximum number of users will be determined by specific system configuration

² Optional feature only supported on selected MOTOTRBO radio models